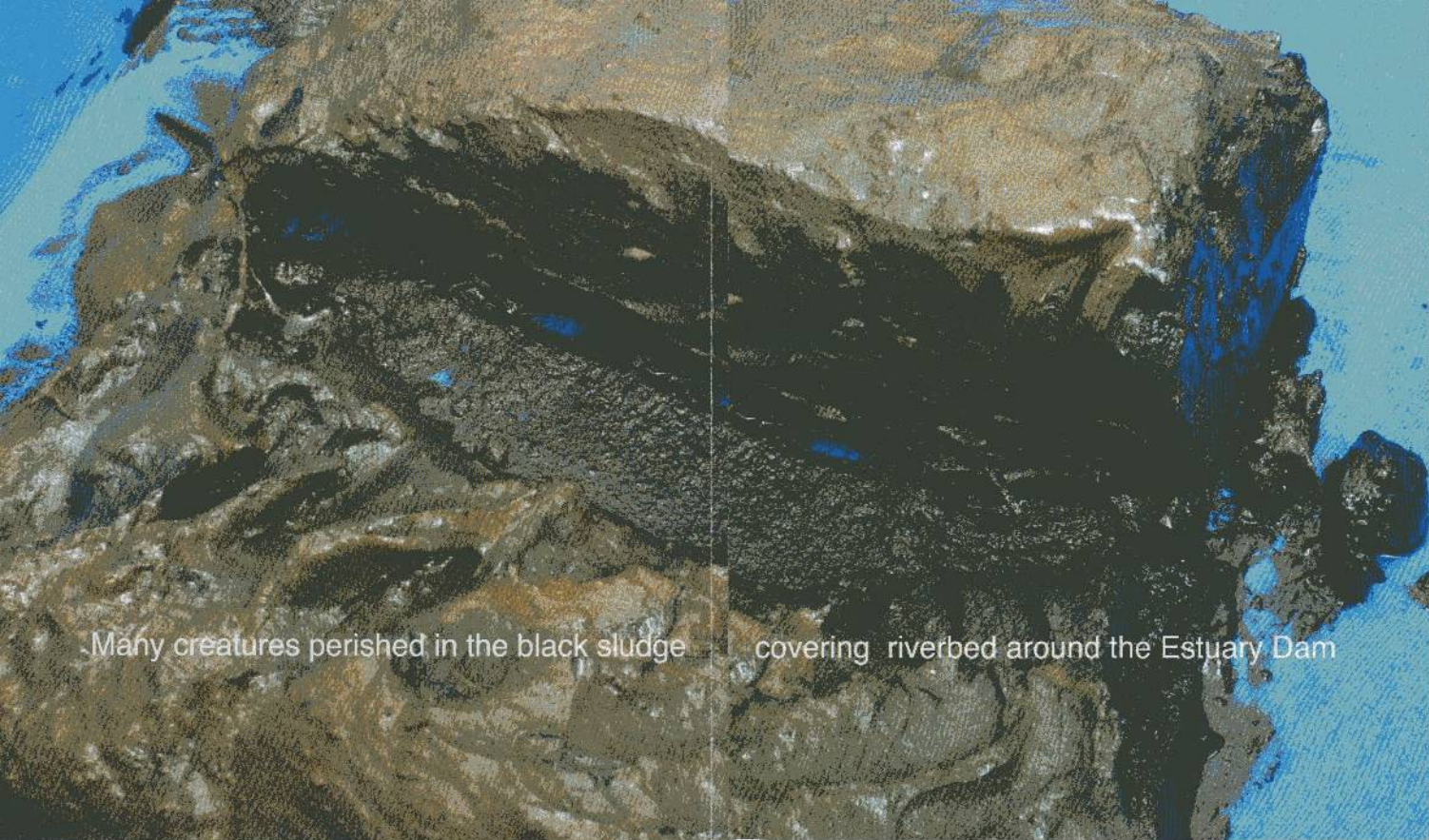




SAVE THE NAGARA RIVER

Open the Gates of the Estuary Dam





Many creatures perished in the black sludge

covering riverbed around the Estuary Dam

Nagara River Estuary Dam Destroyed an Ecosystem

The dam has obstructed the passage of many species of migratory fish and destroyed the area of brackish water, with profound adverse effects on the ecosystem in both the river and surrounding sea and coastline.

Sludge covering the riverbed around the estuary dam is a "world of death". One of the best harvest places of shijimi clams (shell-fish) in Japan was lost.

90% of the Reed-Field Destroyed

As the tidal range was lost and the water level was fixed within a small scale, ninety percent of the reed-field withered away either because of drying out or submergence. The reeds' water-purification function and the cradle for many animals were lost. Thus eutrophication and poor oxygenation are worsening the environment of Ise Bay.



1996.8 after 1yr



2010.4 after 15yrs

Reduction of the reed-field

There is No Necessity Now

The main purpose of the Nagara River Estuary Dam was to supply fresh water to Ise Bay Industrial Area. But still now no water is being used industrially. The financial burden is serious and citizens are forced to pay expenses with tax. A small part of that water is drained for tap water, but it isn't suitable for drinking water. Users have demanded that supplies be changed back to their former safe source.



The best harvest place of shell-fish was lost

Fishermen's Cry

In 2011, Aichi Prefecture, the biggest stakeholder, set up a special committee to investigate the Nagara River Estuary Dam Project. In the meeting, a fisherman gave evidence of the present situation of the river saying, "The Nagara River used to be a treasure, with a lot of species in great numbers. But now it is a barren, miserable river. Please save our river!" Another fisherman said, "We had been against the project from the start but we were forced to accept it because of the industrial development of the Central Japan District." After many meetings, the committee proposed to open the gates to investigate the environment.

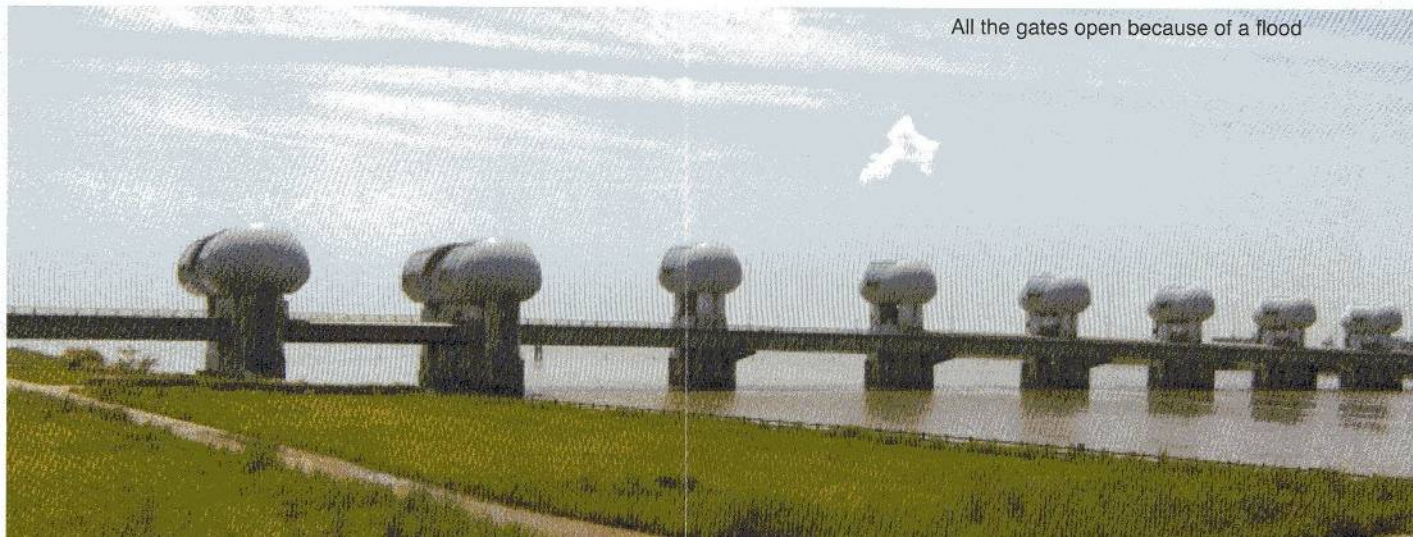
Open the Gates and Restore the Diverse Habitat

Seventeen years have passed since the gates were closed, and we have permanently lost precious environment. However, there are still chances for partial recovery. It's time the policy was changed to fit our aim for a sustainable society. In 2010, COP10 was held in Nagoya City

and adopted the Aichi Target ; to achieve a significant reduction of the current rate of biodiversity loss at global, regional and national levels.

It's our duty to open the gates and restore the diverse habitat in order to realize the spirit of the Aichi Target.

All the gates open because of a flood



The Nagara River Estuary Dam



River : The Nagara (mainstream:166km,basin area:1985 km²)

Location : Kuwana City, Mie Prefecture (20 km southwest of Nagoya)
5.4km upstream of the mouth of the Nagara River

Type : Movable Barrage

Length : 661m (Movable:555m,Fixed 106m)

Cost : 150 billion yen (about 1.9 billion US\$)
200 billion yen (related expenses)

Available water : 22.5 m³ / sec

Construction Period :1988~1995



Publisher: The Nagara River Study Citizen Group <http://dousui.org/>
Address: 500-8211 7-11-1, Hinohigashi, Gifu City, Japan

Publishing date:2012.6.10